

# 8300 DC self generated / E8300 AC self generated

3/8/2011

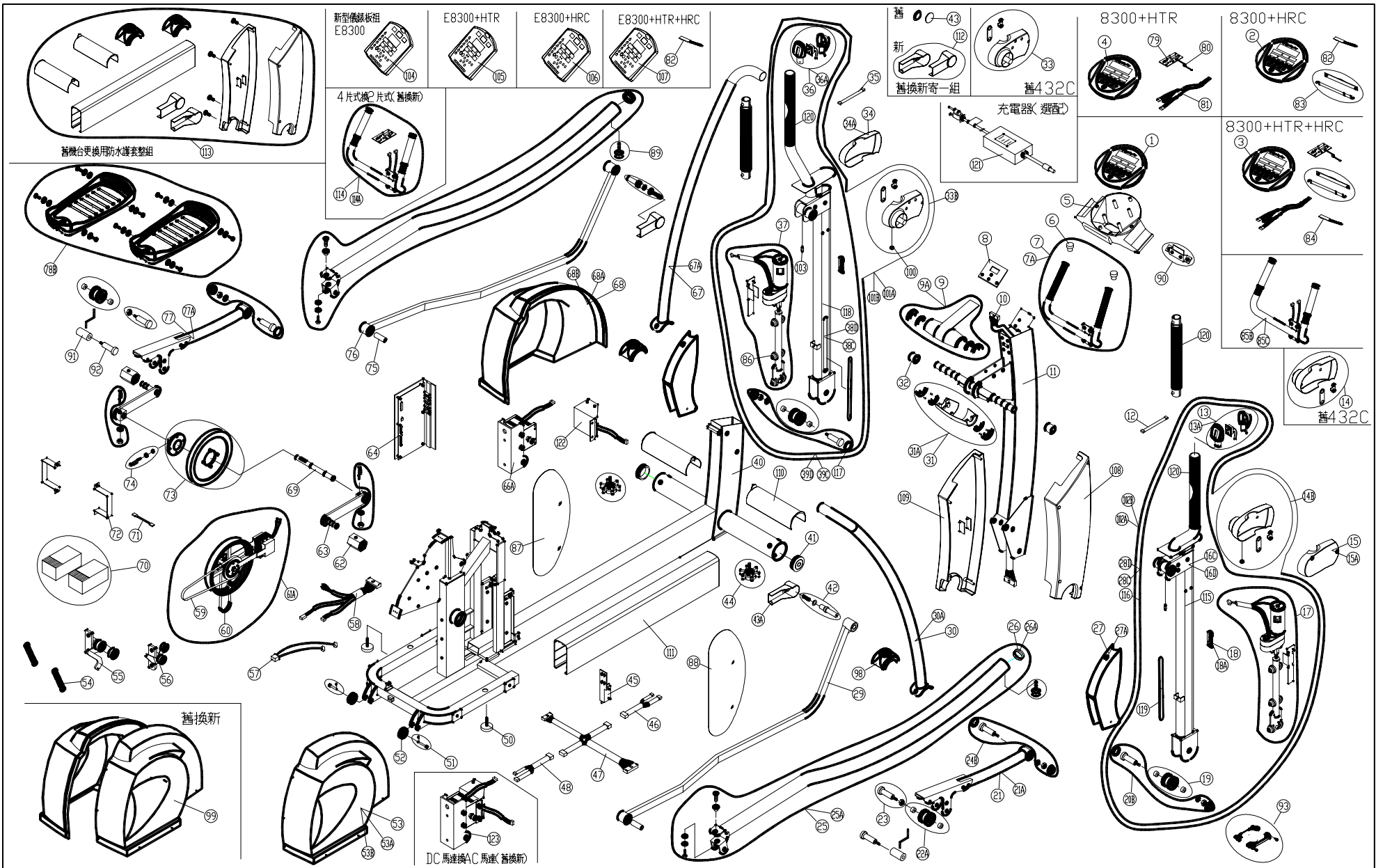
BBL	DESCRIPTION	QTY	PART #
3	8300 - DISPLAY W/ HTR (ROUND)	1	8300-03
*	E8300 - DISPLAY (SQUARE)	1	8300-107
*	8300 DISPLAY TOP RAW, ROUND	1	7100-02A
*	E8300 DISPLAY TOP RAW, SQUARE	1	7100-78A
5	DISPLAY BACK PIECE	1	8300-05
6	GRIP CAP	2	805P-09
7	FIXED HANDLEBAR (NO HTR) BLACK	1	8300-07
*	FIXED HANDLEBAR ( NO HTR) SILVER	1	8300-07A
*	FIXED HANDLEBAR GRIP	2	803-80
8	MOUNTING PLATE	1	8300-08
9A	SUPPORT COVER - TOP	1	8300-09
10	DATA CABLE - UPPER	1	8300-10
11	PEDESTAL	1	8300-11
*	PEDESTAL LABEL 8300	1	8300-11A
*	PEDESTAL LABEL E8300	1	8300-11B
12	WIRE - STRIDE SWITCH	1	805P-07
13A	STRIDE-LENGTH CONTROLLER	1	8300-13
*	SWITCH ONLY	1	805P-04A
14A	INSIDE JOINT COVER - R	1	8300-14
15A	OUTSIDE JOINT COVER - R	1	8300-15
16A	STRIDE SUPPORT ARM - R (DARK GREY)	1	8300-16
17	STRIDE CONTROL MOTOR - R	1	805P-05
18A	ACCESS COVER	2	8300-18
19	GUIDE ROLLER - FRONT (STRIDE ARM)	2	8300-19
*	ROLLER SPACER	4	8300-19A
20	AXLE - FOR GUIDE ROLLER (#19)	2	8300-20
21A	PEDAL CARRIAGE - RIGHT	1	8300-21A
22A	GUIDE ROLLER, UPPER (PEDAL ARM)	2	8300-22
*	ROLLER SPACER	4	8300-22A
23	AXLE - FOR GUIDE ROLLER (#22A)	2	805P-21
24	BOLT, PEDAL CARRIAGE ARM	2	8300-24
25A	STRIDE RAIL	2	8300-25
*	BOLT KIT FOR STRIDE RAIL	2	805P-25A
26A	END CAP	2	8300-26
27A	ROLLER COVER	2	8300-27
28A	STRIDE SUPPORT ASSY - R	1	8300-28
*	STRIDE SUPPORT ASSY -R SILVER	1	8300-28A
29	STRIDE LINKAGE - R	1	805P-41
*	STRIDE LINKAGE - R, SILVER UNITS	1	805P-41B
30A	FRAME SUPPORT - R	1	8300-30
*	SUPPORT BAR SILVER - R	1	8300-30A
31A	SUPPORT COVER - BOTTOM	1	8300-31
32	SLEEVE	2	8300-32
33A	INSIDE JOINT COVER - L	1	8300-33
34A	OUTSIDE JOINT COVER - L	1	8300-34
35	WIRE - LEVEL SWITCH	1	805P-32
36A	RESISTANCE LEVEL CONTROLLER	1	8300-36
*	SWITCH ONLY	1	805P-04A
37	STRIDE CONTROL MOTOR - L	1	805P-12
38A	STRIDE SUPPORT ARM - L (DARK GREY)	1	8300-38
39A	STRIDE SUPPORT ASSY - L	1	8300-39
*	STRIDE SUPPORT ASSY - L SILVER	1	8300-39A
40	N/A	0	N/A
41	END CAP - ROUND	2	5007-20
42	BUSHING	2	805P-40
*	BOLT (FOR 805P-40)	2	805P-41A
43	BOLT COVER	2	805P-39
44	LEVELER - FRONT	2	8300-44
45	OPTICAL (TACH) SENSOR	1	8007-39
46	WIRE - VR ASSY, LEFT	1	805P-76
47	DATE CABLE	1	805P-24
48	WIRE - VR ASSY, RIGHT	1	805P-77
50	LEVELER - REAR	2	7100-34
51	WHEEL AXLE	2	3106-34
52	TRANSPORT WHEEL	2	805P-57
53A	SIDE COVER - R	1	8300-53
*	SIDE COVER - R E8300	1	E8300-53
54	IDLER SPRING - 12" LONG	2	8100-86
55	IDLER PULLEY ASSY - LOWER	1	8003-46
56	IDLER PULLEY ASSY - UPPER	1	8003-45
57	WIRE - BATTERY TO DRV BOARD	1	8300-57
58	WIRE HARNESS, DRV BRD TO GEN, MAG, OPTIC	1	8300-58
59	GENERATOR BELT - (#440J5)	1	8300-59
60	DRIVE BELT - 460J7 O/S FLYWHEEL GOLD	1	7005-43
*	DRIVE BELT - 460J8 N/S FLYWHEEL BLACK	1	8300-199
61	FLYWHEEL ASSY - BLACK	1	8300-61
62	MOUNT BLOCK	2	805P-43

BBL	DESCRIPTION	QTY	PART #
63	CRANK ARM	2	805P-44
64	DRIVE BOARD	1	8300-64
*	FUSE - 2A, GENERATOR	1	F2ST-01
*	FUSE - 1A, BATTERY	1	F1ST-01
65	CARBON BRUSH, PAIR	1	8300-65
66	GENERATOR MOTOR	1	N/A
*	AC ALTERNATOR	1	8300-66A
67A	FRAME SUPPORT - L	1	8300-67
*	FRAME SUPPORT SILVER - R	1	8300-67A
68A	SIDE COVER - L	1	8300-68
*	SIDE COVER - L E8300	1	E8300-68
69	DRIVE AXLE W/ BEARINGS & TOOL	1	8003-52
70	12V BATTERY W/ SPADE CONNECTOR	2	8300-70
71	WIRE - BATTERY JUMPER	1	8300-71
72	BATTERY BRACKET	2	8300-72
73	DRIVE PULLEY ASSY	1	8100-66
74	WEDGE PIN	3	8100-63
75	BUSHING	2	805P-42
76	STRIDE LINKAGE - L	1	805P-72
*	STRIDE LINKAGE - L, SILVER UNITS	1	805P-72A
77A	PEDAL CARRIAGE - LEFT	1	8300-77A
78A	FOOT PEDAL	2	8300-78
*	** FOOT PEDAL SCREW KIT ** (KIT OF 4)	2	**
79	HTR PCB BOARD	1	3100-74
80	WIRE - HTR PCB TO DISPLAY	1	8300-80
81	WIRE - HTR PCB TO HANDLEBAR	1	8300-81
82	N/A	0	N/A
83	HTR TRANSMITTER BELT (OPTION)	1	3100-03A
84	POLAR HR RECEIVER	1	7100-70
85A	** HANDLEBAR W/ HTR, BLACK - SEE NOTES	1	8300-85
*	** HANDLEBAR W/ HTR, SILVER - SEE NOTES	1	8300-85B
86	GUIDE WHEEL, STRIDE MOTOR	8	805P-33
87	INSIDE PANEL - L	1	8300-100
88	INSIDE PANEL - R	1	8300-101
89	STOPPER	2	1200-15
90	CARDIO PCB W/ BRACKET	1	8300-102
91	BUSHING, PEDAL CARRIAGE	2	8300-91
92	BOLT - FOR BUSHING (BBL #91)	2	8300-92
93	STRIDE ARM PROTECTIVE PIECE	2	8300-93
98	SUPPORT BAR COVER	2	8300-98
108	WATER COVER RIGHT	1	8300-108
109	WATER COVER LEFT	1	8300-109
110	FRONT LEG COVER	2	8300-110
111	FRAME COVER	2	8300-111
112	RIGHT ADJUST ARM COVER	1	805P-39
113	WATER COVER SET	1	8300-113
119	STRIDE ARM ADJUST COVER	2	8300-119
120	GRIP, HANDLEBAR	2	8300-120
122	RECTIFIER BOARD FOR ALTERNATOR	1	8300-122

### ADDITIONAL PARTS NOT SHOWN

*	8300 OWNERS MANUAL	1	8300-OM
*	BATTERY CHARGER	1	8300-114
*	BEARING, STRIDE SUPT. #TA243220	2	8300-94
*	ECB MAGNET	1	5002-93
*	FLYWHEEL BEARING, 6000Z	3	5002-85
*	FLYWHEEL OPTIC STICKER	1	8300-125
*	FLYWHEEL WASHER	1	8300-123
*	GENERATOR BUSHING FOR PIN	1	8007-44A
*	HARDWARE KIT (TOOLS ONLY)	1	8300-90
*	HTR RETRO-FIT KIT (OPTION)	1	8300-85A
*	IDLER STOPPER KIT	1	8300-124
*	8300 - KEYPAD & OVERLAY - ROUND	1	8300-DD001
*	E8300 - OVERLAY - SQUARE	1	8300-DD324
*	LABEL, L SIDE COVER	1	8300-86
*	LABEL, R SIDE COVER	1	8300-87
*	PEDAL CARRIAGE - L (OLD)	1	8300-77
*	PEDAL CARRIAGE - R (OLD)	1	8300-21
*	POLAR HEART RATE SIMULATOR	1	POLAR-01
*	SPINDLE BEARINGS, 6204Z	2	8003-73
*	STRIDE LINK. BEARING FRONT 6002ZZ	4	805P-101
*	STRIDE LINK. BEARING REAR 6001ZZ	4	5006-55

\*\* WENT TO SILVER "E" SERIES 0101317  
 0013900 CAME W/ SWEAT GUARDS 12/03  
 0125635 NEW PEDAL CARRIAGE BOLT 6/2/05  
 0140129 A/C ALTERNATOR  
 0155446 NEW FLYWHEEL & SPINDLE (8003-52)  
 \*\* BBL 85 - 4 HTR PAD HANDLEBARS WILL REQUIRE NEW HTR BOARD



變更日期	變更說明	變更者	變更日期	變更說明	變更者
94.8.9	取消(66)(67)(61)(64)	設計處	94.4.19	修改(20)→(20)	設計課
93.6.28	增加(10)(11)(12)(13)(14)(15)(16)(17)(18)(19)(21)(22)(23)(24)(25)(26)(27)(28)(29)(30)(31)(32)(33)(34)(35)(36)(37)(38)(39)(40)(41)(42)(43)(44)(45)(46)(47)(48)(49)(50)(51)(52)(53)(54)(55)(56)(57)(58)(59)(60)(62)(63)(65)(68)(69)(70)(71)(72)(73)(74)(75)(76)(77)(78)(79)(80)(81)(82)(83)(84)(85)(86)(87)(88)(89)(90)(91)(92)(93)(94)(95)(96)(97)(98)(99)	設計處	94.5.23	增加(20)	機設處
93.9.7	增加(10)(11)(12)(13)(14)(15)(16)(17)(18)(19)	設計課	94.7.28	增加(20)	機設處

  
 力伽實業股份有限公司

製圖	單位	MM	名稱	業務用爆炸圖	圖號	CP-F001A
	台量	1		材質		X
審核	版本	2	比例	1/3	投影	第三角法
	表面處理					